

WATER CONSERVATION REBATES AND PROGRAMS

Brett Briant
29/JAN/2016



CONNECT WITH LCRA




TIPS | [view all](#)

PROGRAMS | [view all](#)



Using water wisely benefits us all. LCRA has a wide range of conservation programs for different water users within the Lower Colorado River basin.

RESOURCES | [view all](#)



LCRA helps you find information on the local, state and national levels for everything from rainwater harvesting to gardening and water source research.

TOOLS | [view all](#)



The WaterMyYard tool uses local weather data to provide recommendations on how long to run outdoor irrigation systems to maintain healthy lawns while conserving water.

VIDEOS | [view all](#)

Test Your Irrigation System



Use Mulch and Save Water



Replace Riser Seal



Raw Water Contracts Domestic Use (DU)

- Property Less Than 2 acres
- Property Greater than 2 acres
- Temporary Raw Water Contracts & 20ACF or less require a meter
- Rules
- Drought Contingency Plan (DCP)



Ruler

Line Path Polygon Circle 3D path 3D polygon

Measure the distance or area of a geometric shape on the ground

Perimeter: 769.39 Feet

Area: 0.49 Acres

Mouse Navigation Save Clear

50 ACRE

© 2015 Google

Google earth

50 ACRE



© 2015 Google

Google earth

RULES AND RATES

- No More than 2x/week
- W/SAT ODD
- THU/SUN EVEN
- NO WATERING BETWEEN 10A-7P
- NO WATER WASTE
- OFF NOV 1st thru FEB
- BACKFLOW PREVENTION ASSEMBLY ON DOMESTIC INDOOR, FERITGATON AND PESTIGATION
- 3.6ACF/IRRIGATED ACRE (1"per week per 1Ksqft for 26 weeks)
- \$145/ACF (325,851 gallons)

LCRA Residential Irrigation Retrofit Rebate Program

- \$350.00 per system or 50% whichever is less
- \$5.00 per pressure regulated head
- 50% of the cost of pressure regulating nozzles
- \$250.00 for Soil Moisture Sensor
- \$50.00 for Rain/Freeze Sensor

Effects of Pressure

Pressure (PSI)	Water Loss Multiplier
30	0.00
35	0.08
40	0.16
45	0.23
50	0.29
55	0.35
60	0.41
65	0.47
70	0.53

Rain Bird® Corporation

60 AVG Yards at 55 PSI

- $15 \text{ gpm} \times 35\% = 5.25 \text{ gpm waste}$
- $5.25 \text{ gpm} \times 15 \text{ minutes} = 105 \text{ gallons per zone}$
- $105 \text{ gallons} \times 8 \text{ zones} = 840 \text{ gallons per watering}$
- $840 \text{ gallons} \times 1 \text{ watering per week} = 840 \text{ gallons}$
- $840 \text{ gallons} \times 40 \text{ weeks} = 33,600 \text{ gallons}$
- $33,600 \times 60 \text{ systems} = 2,016,000 \text{ gallons wasted}$
- $2,016,000 \div 325,861 =$

6.20 acre feet of water wasted

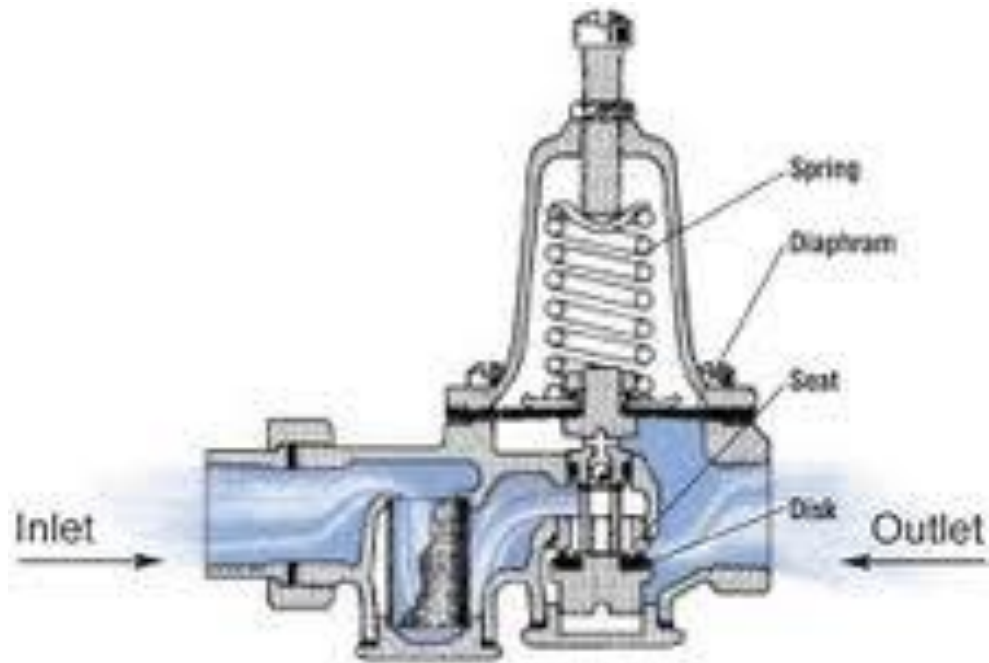
- LOWER COLORADO RIVER AUTHORITY HAVE NOT AND DO NOT MAKE ANY REPRESENTATIONS, WARRANTIES OR PROMISES, EITHER EXPRESS OR IMPLIED, WITH RESPECT TO ANY IRRIGATION EQUIPMNET, INCLUDING BUT NOT LIMITED TO ANY WARRANTIES OF MERCHANTABILITY OR FITNESS FOR A PARTICULAR PURPOSE, OR QUALITY, RELIABILITY, DURABILITY, WATER SAVINGS, OR COMPATIBILITY WITH YOUR EXISTING IRRIGATION SYSTEM.



PSI-L30X-075

PSI-M50X-075

PSI-M40X-100







TORO

Irrigation

Precision™ Irrigation Solutions

Higher overall irrigation efficiency



1/3
less flow



Precision™ Series Spray Nozzle

www.toro.com/irrigation





Hunter®



Product images are courtesy of Hunter Industries

Rain-Clik (wireless)

LCRA
ENERGY • WATER • COMMUNITY SERVICES



THE ROOTS ARE WHERE THE WATER IS NEEDED





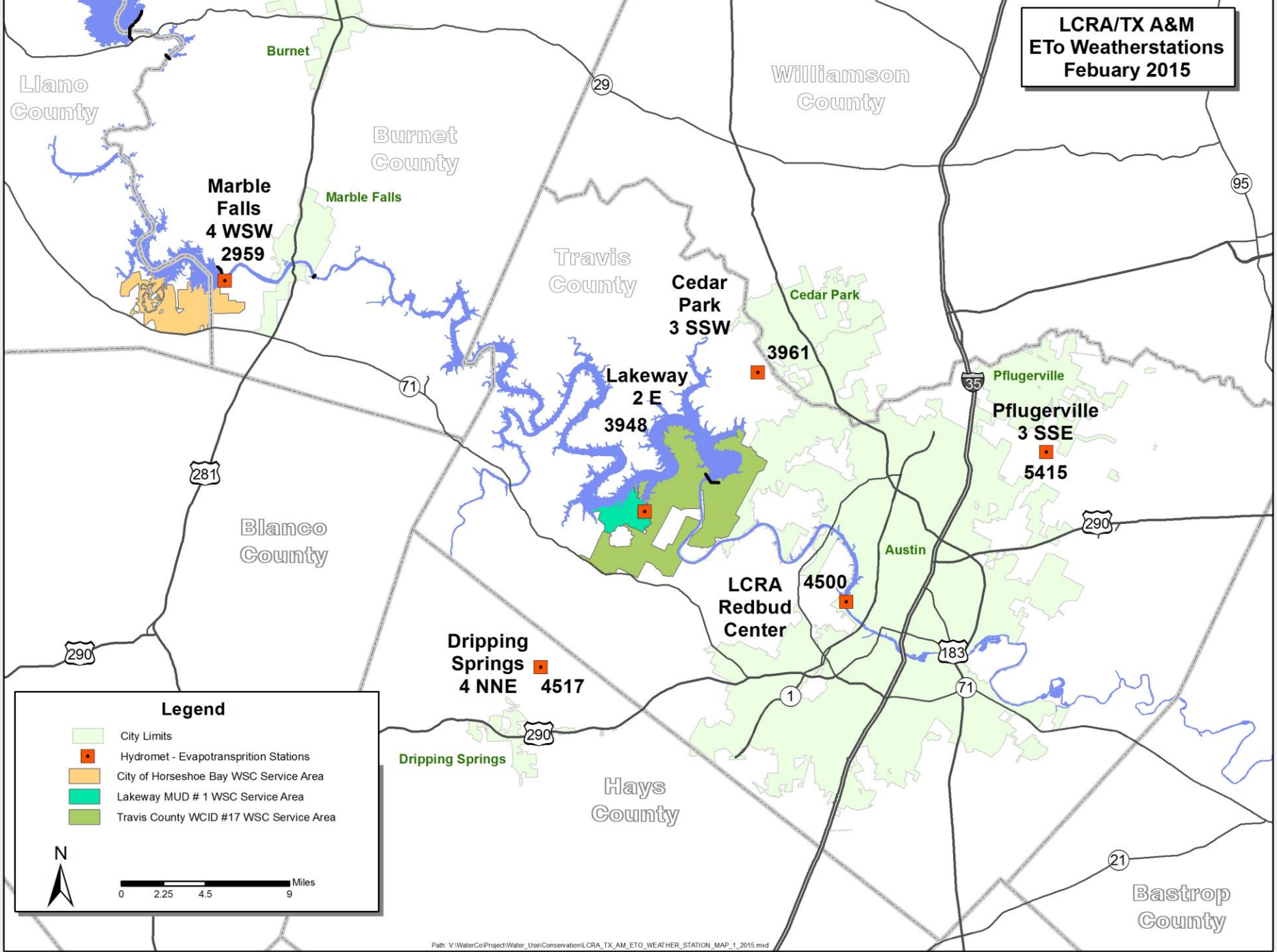
WaterMyYard Program

- LCRA partnered with TX A&M Agrilife
- Tool for irrigators and homeowners to develop water use requirements
- Data is in runtimes and not inches with weekly emails or texts
- Using the existing systems precip rates

WMY Locations

- Daily ETo with weekly emails or texts
- 6 stations
- Marble Falls
- Lakeway
- Cedar Park
- Pflugerville
- Redbud
- Dripping Springs

**LCRA/TX A&M
ETo Weatherstations
February 2015**



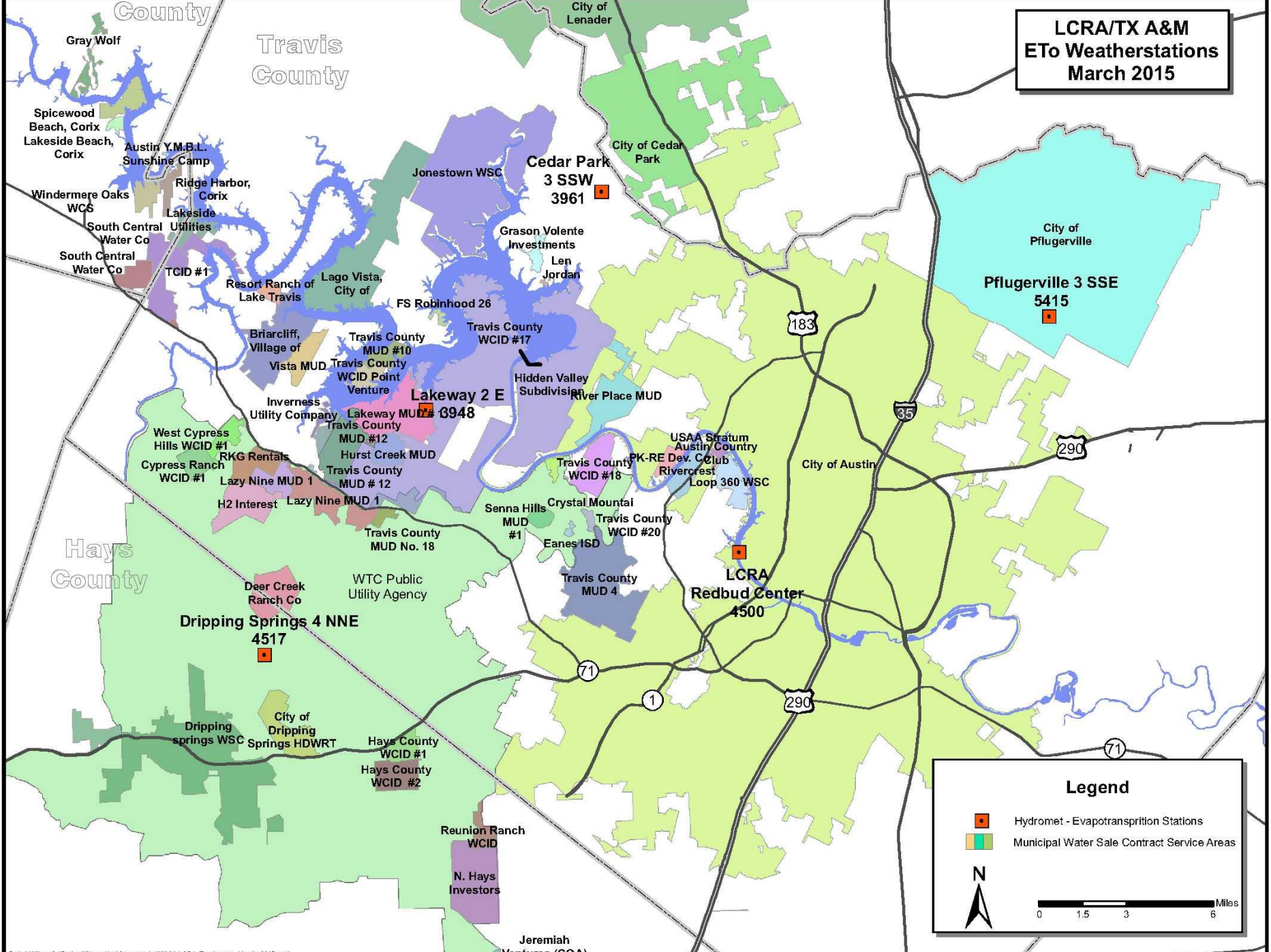
Legend

- City Limits
- Hydromet - Evapotranspiration Stations
- City of Horseshoe Bay WSC Service Area
- Lakeway MUD # 1 WSC Service Area
- Travis County WCID #17 WSC Service Area

N

0 2.25 4.5 9 Miles

**LCRA/TX A&M
ETo Weatherstations
March 2015**



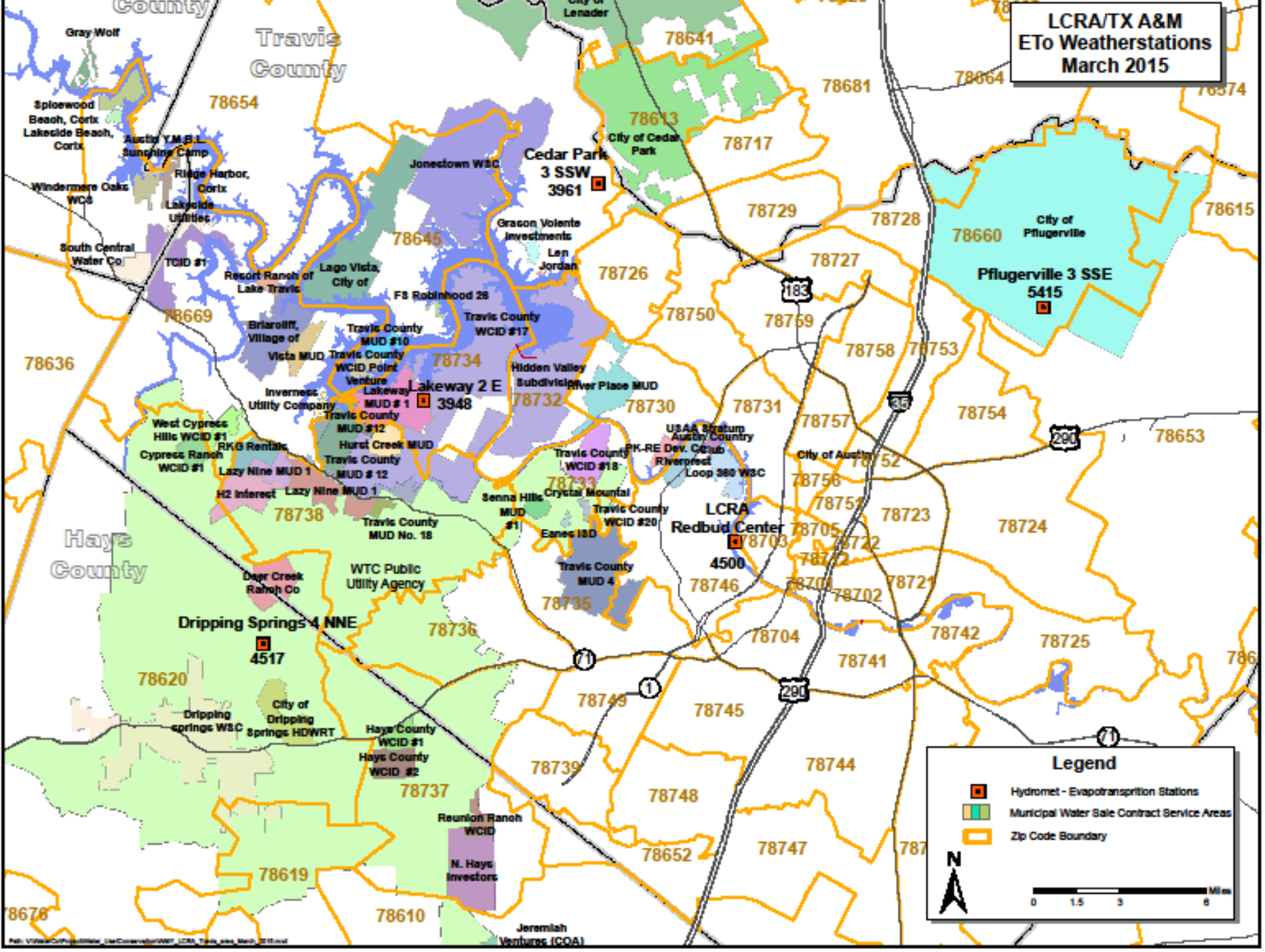
Legend

- Hydromet - Evapotranspiration Stations
- Municipal Water Sale Contract Service Areas

N

0 1.5 3 6 Miles

**LCRA/TX A&M
ETo Weatherstations
March 2015**

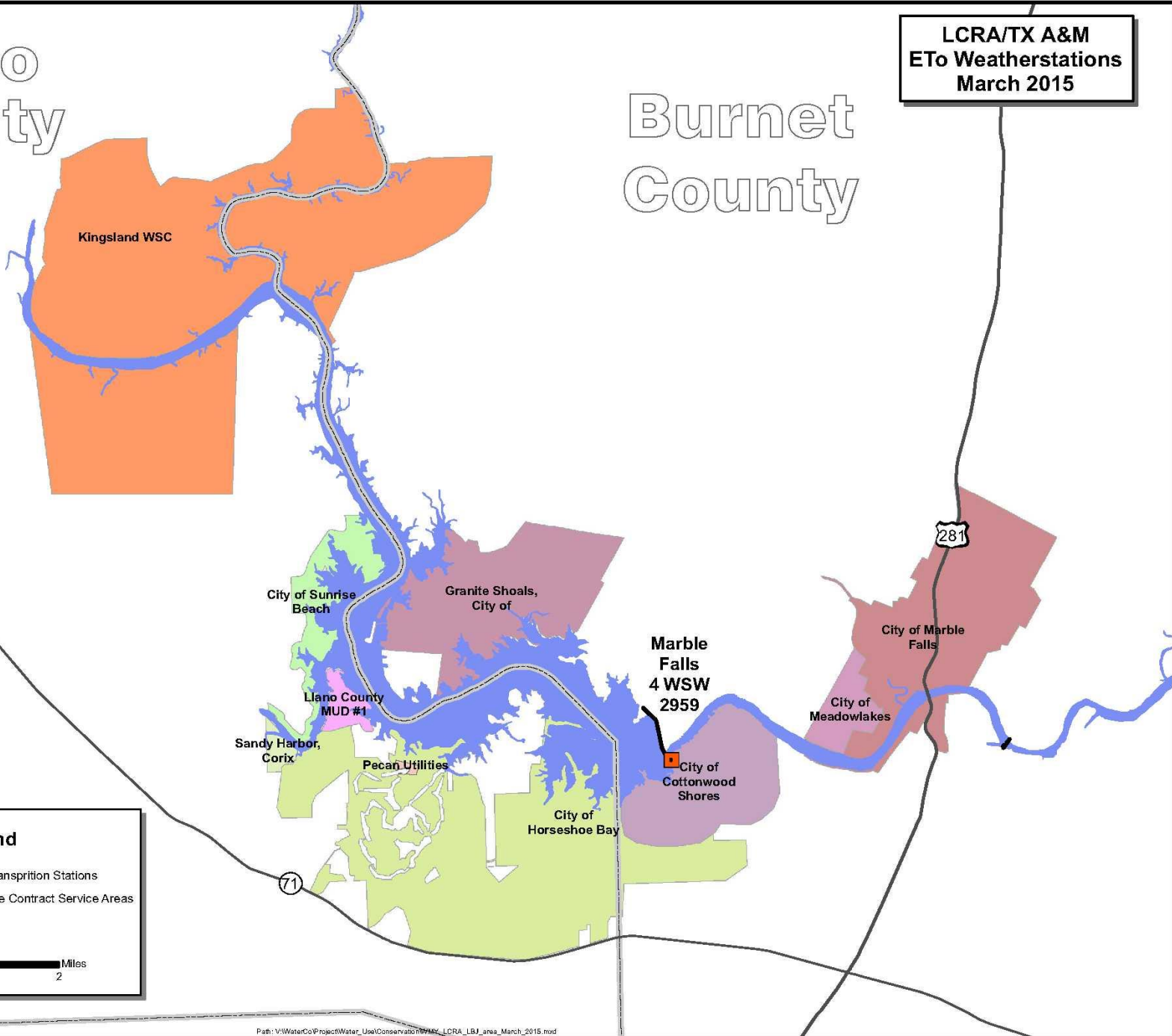


Map View: Copyright © 2015, Esri. All rights reserved. Esri, the Esri logo, ArcGIS, the ArcGIS logo, and the ArcGIS logo are either registered trademarks or trademarks of Esri Inc. in the United States and/or other countries.



Llano County


Burnet County

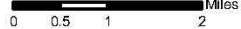
LCRA/TX A&M
ETo Weatherstations
March 2015



Legend

-  Hydromet - Evapotranspiration Stations
-  Municipal Water Sale Contract Service Areas

 N

 Miles
0 0.5 1 2

Customer Service

- Read the meter weekly or as often as possible
- Prioritize leaks
- Spray to drip in all beds
- Replace sensors every two years
- Train the customer
- **STANDARDIZE EQUIPMENT**

Reading the meter

- Helps you develop water budget
- You can share data w/customer
- Prioritize water needs
- You are a water manager and need the information to MEASURE

Standardizing

- How many different types of spray nozzles, rotors, drip tubing, emitters and **CONTROLLERS** do you and your crew have to deal with?

TIME **STATION** RESET

DAY OFF ON

This panel features two circular dials on the left. The top dial is labeled 'TIME' and has a scale from 0 to 24. The bottom dial is labeled 'DAY' and has a scale from 1 to 7. To the right is a large circular dial labeled 'STATION' with 12 numbered positions (1-12) and a 'RESET' button. A small blue arrow points to position 1. Below the dials is a switch labeled 'OFF' and 'ON'.

RAIN BIRD

RAIN BIRD CONTROLLER
PAT. NO'S 3885470-3886378
MADE IN U.S.A. SER. NO. UC 15945

TIME **STATION** RESET

DAY OFF AUTO

This panel features two circular dials on the left. The top dial is labeled 'TIME' and has a stylized bird logo in the center. The bottom dial is labeled 'DAY' and is solid black. To the right is a large circular dial labeled 'STATION' with 12 numbered positions (1-12) and a 'RESET' button. Below the dials is a switch labeled 'OFF' and 'AUTO'.

RAIN BIRD

RAIN BIRD CONTROLLER
PAT. NO'S 3885470-3886378
MADE IN U.S.A. SER. NO. LC 4285



HIGH

OFF AUTO

AC-701

STATION

TM



10

2

3

1

8

4

9



MANUAL
START
PRESS
& HOLD



BYPASS
ACTIVE



RAIN SENSOR

RUN

Hunter® Pro-C

SYSTEM OFF

MANUAL - SINGLE STATION

SEASONAL ADJUSTMENT

SET PUMP OPERATION

SET CURRENT DATE / TIME

SET PROGRAM START TIMES

SET STATION RUN TIMES

SET DAYS TO WATER

PROGRAM
A B
7:00 AM
We
NOAC



MANUAL
CLEAR
RAIN DELAY
PROGRAM A-B

+

ENTER

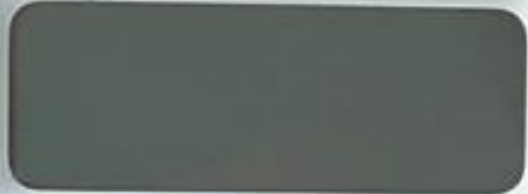
-

RESET

SET DATE
START TIME
RUN TIME
OFTEN MOH
OFF
AUTO
SET CLOCK

RAIN BIRD

ALARM



ON OFF MANUAL START ADVANCE

ADVANCED PROGRAMMING OFF AUTO
SEASONAL ADJUST %
TEST ALL VALVES
ADVANCED CYCLES
PROGRAM A B C
SENSOR ACTIVE BY PASSED
SET CURRENT DATE
SET CURRENT TIME
SET WATERING START TIMES
CUSTOM CYCLE
SELECT DAYS TO WATER
SET VALVE RUN TIME

ESP MODULAR

RAIN BIRD





TORO

CUSTOM COMMAND

ON OFF NEXT

1 2 3 4 5 6 7 8 9 10 11 12

Program

12 STATIONS



M Tu W Th F Sa Su press

program
days
cycle
starts
valve

12345678M

time
sensor
manual
rain off
duration

OFF — TIME/DATE
TEST — WEEKLY CYCLIC CONTROL
MANUAL — START TIME
RAIN OFF — DURATION
WATER BUDGET

AC4 GO

GaiCo



IP Address →
192.168.0.195

↑
← OK →
↓


IrrigationCaddy

Sensors Valves 24VAC

F1	F2	RS1	RS2	11 MV	10	9	8	7	6	5	4	3	2	1	30C	AC1	AC2
----	----	-----	-----	-------	----	---	---	---	---	---	---	---	---	---	-----	-----	-----



Questions

Brett Briant

bbriant@lcra.org

www.lcra.org

www.watersmart.org

(512)369-4775